

Executive Summary

Customer	Reynolds Porter Chamberlain
Location	Tower Bridge House, London
Requirement	A new structured cabling system installed in their new premises to support a 500 strong workforce.
Equipment	Belden Bonded Cable – 6,000 Cat 6 points OM3 Fibre backbone
Customer's View	<p>“Able Data were the obvious choice for us, with over 15 years in the cabling industry they had the expertise that was needed to complete such a demanding installation within the required timescales.”</p> <p><i>Neil Davison, (IT Manager) Reynolds Porter Chamberlain</i></p>

Reynolds Porter Chamberlain (RPC) is a 63 partner law firm which employs 500 people. The company has some of the sharpest minds in the UK legal market, operating within two divisions. A commercial division which offers a full business law service across a wide range of industries and an insurance division which stands alone in fulfilling the specialist needs of the insurance industry.

The company provides a one-stop service to UK and international clients, working on projects spanning many jurisdictions. Due to their continued success, RPC had outgrown their existing premises and needed to expand into a larger building. This new facility was located out of Tower Bridge House in London.

Able Data, a leading voice and data cabling infrastructure provider, specialise in the design, installation and maintenance of high quality structured cabling solutions. They were contracted to carry out the installation of the new structured cabling system after the project had been won following a formal tender process which was managed by Coleman Bennett International (CBI). David Boyce, *Technical Director of CBI* commented “Able Data had been successful, due to their commitment to deliver the project and competitive pricing”.



● RPC's new premises
Tower Bridge House, London





The product range chosen for this highly prestigious job was Belden's bonded cabling system. There were a number of reasons why Belden was the proposed solution. As well as it being an up market highly respected brand, the bonded pair cable provided Able Data with a competitive solution, which provided excellent resilience against damage.

The full extent of the task itself was a 6,000 Cat 6 outlet installation, providing a flood wired facility, over four floors of the building. In order to fit into the busy move schedule Able Data utilised a pre-terminated cable service.

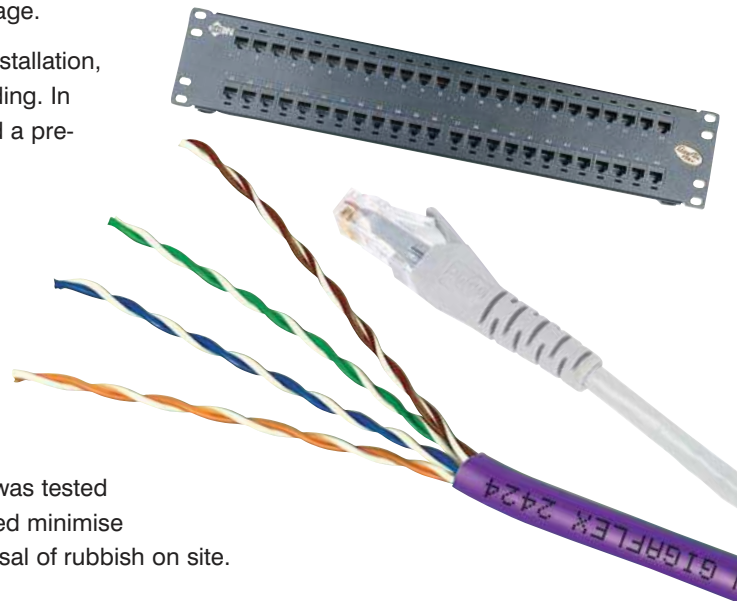
Able Data were able to source the Belden products through leading UK distributor Mayflex. Mayflex ensured that the product was delivered on time enabling the project to run to schedule.

The pre-terminated looms were delivered on labelled dispensers that allowed their engineers to install the cables quickly and efficiently and saving them a considerable amount of time on site. Each loom was tested and supplied with a test certificate. This service also helped minimise the amount of cable that was wasted and alleviated disposal of rubbish on site.

The Able Data engineers were then able to re-test the looms of Bonded Cable once they had been installed, providing them with almost identical test results.

To accompany the bonded cable that was installed Able Data were also responsible for designing and installing an iTRACS cable management system which allowed RPC to manage their new infrastructure easily.

Christine Hatton, Business Development Manager at Able Data commented "We are delighted that Reynold Porter Chamberlain selected Able Data to have assisted them with this innovative project. This only further adds to Able Data's reputation of working with high profile city organisations."



Result

RPC now have a building which will allow them to quickly and easily make any essential changes to their office layout and therefore provide them with long term flexibility as their business continues to grow.



Contact Chris Hatton
Email chris.hatton@abledata.co.uk
Tel 01442 219580
www.abledata.co.uk

Able Data Installations Plc, Able House, 1 Figtree Hill,
 Hemel Hempstead, Herts HP2 5XL



Excel House, Junction Six Industrial Park, Electric Avenue, Birmingham B6 7JJ
Tel 0121 326 7557 **Fax** 0121 327 1537 **Email** sales@mayflex.com

WWW.MAYFLEX.COM